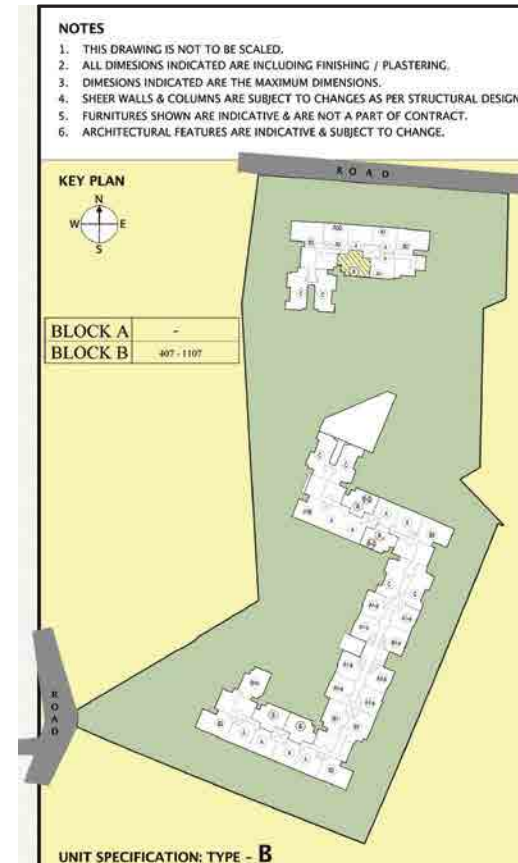


TYPICAL 3 BHK UNIT



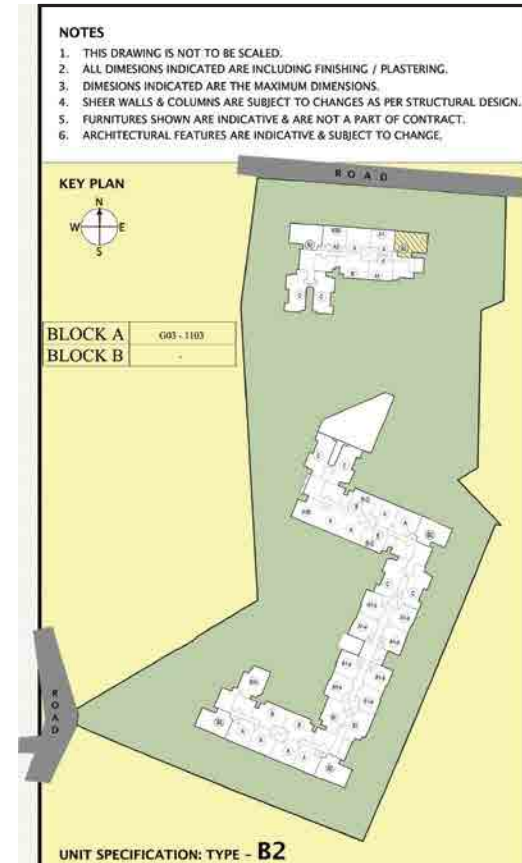
SUPER BUILT-UP AREA	CARPET AREA
157.14 Sq.m (1,691 Sq.ft.)	106.17 Sq.m (1,142.81 Sq.ft.)

BALCONY CARPET AREA
9.16 sq.m (98.59 Sq.ft.)

The information depicted herein viz., master plans, floor plans, furniture layout, fittings, illustrations, specifications, designs, dimensions, rendered views, colours, amenities and facilities etc., are subject to change without notifications as may be required by the relevant authorities or the developer's architect, and cannot form part of an offer or contract. Whilst every care is taken in providing this information, the Developer cannot be held liable for variations. All illustrations and pictures are artist's impression only. The information are subject to variations, additions, deletions, substitutions and modifications as may be recommended by the company's architect and/or the relevant approving authorities. The Developer is wholly exempt from any liability on account of any claim in this regard. (1 square metre = 10.764 square feet). E & OE.

All dimensions and calculations are done in metric system (M/ Sq.m), and imperial system (Ft/ Sq.ft) shown is for reference only.

TYPICAL 3 BHK UNIT

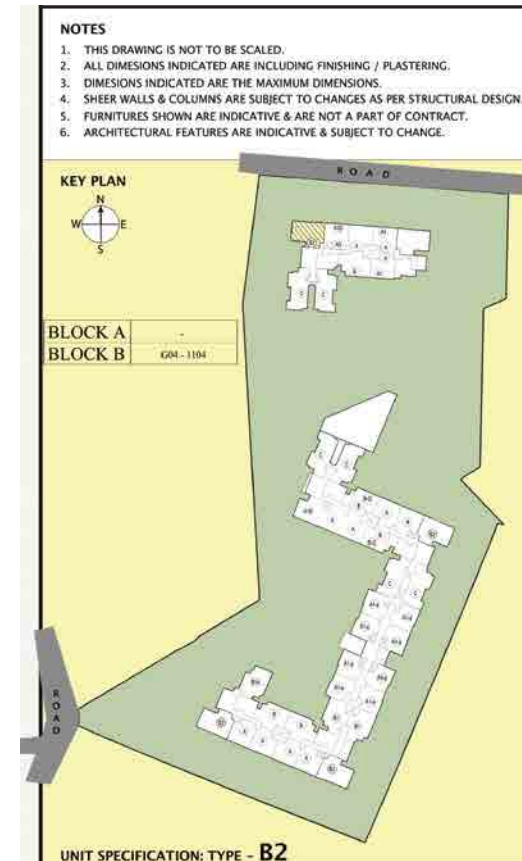
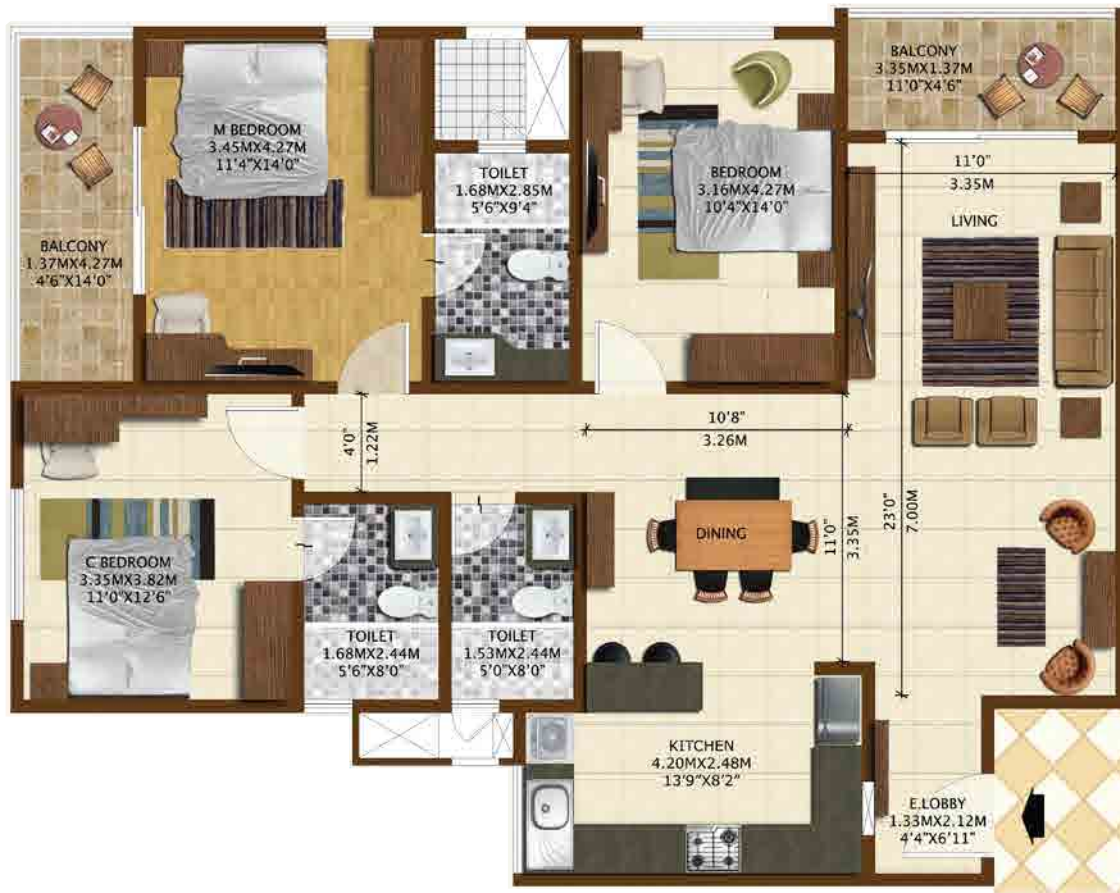


SUPER BUILT-UP AREA	CARPET AREA
166.82 Sq.m (1,796 Sq.ft.)	110.94 Sq.m (1,194.15 Sq.ft.)
BALCONY CARPET AREA	
10.42 sq.m (112.16 Sq.ft.)	

The information depicted herein viz., master plans, floor plans, furniture layout, fittings, illustrations, specifications, designs, dimensions, rendered views, colours, amenities and facilities etc., are subject to change without notifications as may be required by the relevant authorities or the developer's architect, and cannot form part of an offer or contract. Whilst every care is taken in providing this information, the Developer cannot be held liable for variations. All illustrations and pictures are artist's impression only. The information are subject to variations, additions, deletions, substitutions and modifications as may be recommended by the company's architect and/or the relevant approving authorities. The Developer is wholly exempt from any liability on account of any claim in this regard. (1 square metre = 10.764 square feet). E & OE.

All dimensions and calculations are done in metric system (M/ Sq.m), and imperial system (Ft/ Sq.ft) shown is for reference only.

TYPICAL 3 BHK UNIT

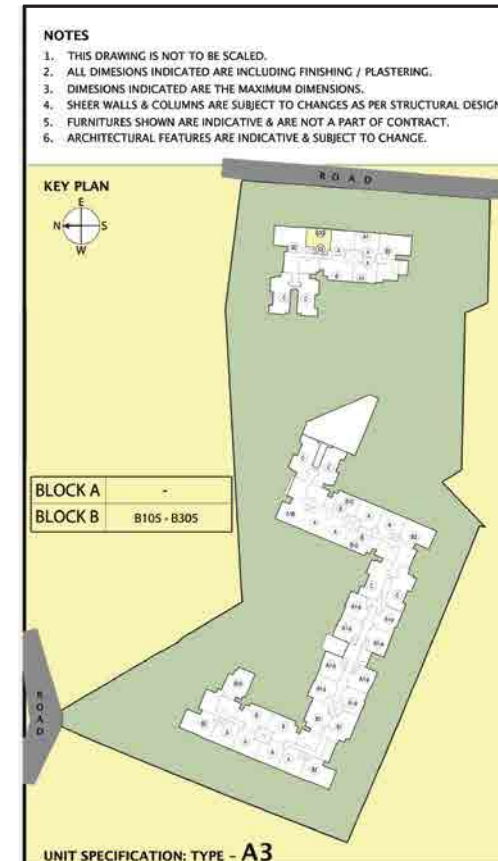


SUPER BUILT-UP AREA	CARPET AREA
166.82 Sq.m (1,796 Sq.ft.)	110.94 Sq.m (1,194.15 Sq.ft.)
BALCONY CARPET AREA	
10.42 sq.m (112.16 Sq.ft.)	

The information depicted herein viz., master plans, floor plans, furniture layout, fittings, illustrations, specifications, designs, dimensions, rendered views, colours, amenities and facilities etc., are subject to change without notifications as may be required by the relevant authorities or the developer's architect, and cannot form part of an offer or contract. Whilst every care is taken in providing this information, the Developer cannot be held liable for variations. All illustrations and pictures are artist's impression only. The information are subject to variations, additions, deletions, substitutions and modifications as may be recommended by the company's architect and/or the relevant approving authorities. The Developer is wholly exempt from any liability on account of any claim in this regard. (1 square metre = 10.764 square feet). E & OE.

All dimensions and calculations are done in metric system (M/ Sq.m), and imperial system (Ft/ Sq.ft) shown is for reference only.

TYPICAL 3 BHK UNIT



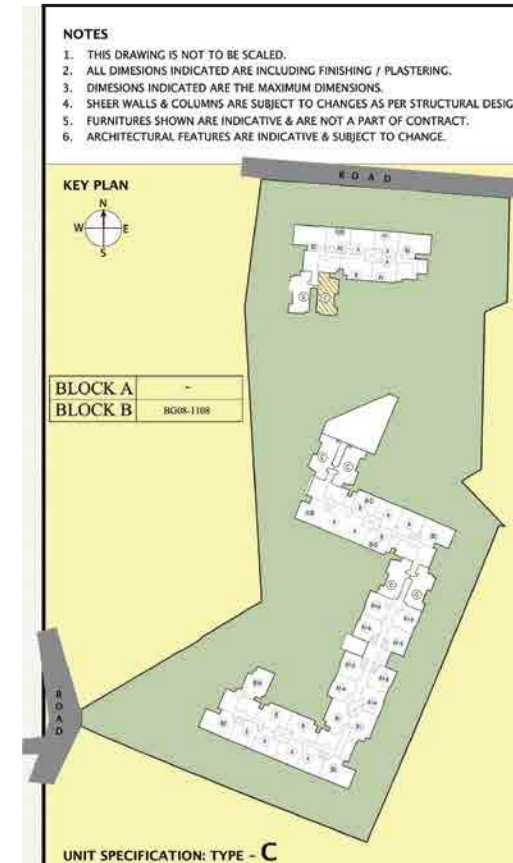
SUPER BUILT-UP AREA	CARPET AREA
167.19 Sq.m (1,800 Sq.ft.)	111.77 Sq.m (1,203.09 Sq.ft.)

BALCONY CARPET AREA
9.16 sq.m (98.59 Sq.ft.)

The information depicted herein viz., master plans, floor plans, furniture layout, fittings, illustrations, specifications, designs, dimensions, rendered views, colours, amenities and facilities etc., are subject to change without notifications as may be required by the relevant authorities or the developer's architect, and cannot form part of an offer or contract. Whilst every care is taken in providing this information, the Developer cannot be held liable for variations. All illustrations and pictures are artist's impression only. The information are subject to variations, additions, deletions, substitutions and modifications as may be recommended by the company's architect and/or the relevant approving authorities. The Developer is wholly exempt from any liability on account of any claim in this regard. (1 square metre = 10.764 square feet). E & OE.

All dimensions and calculations are done in metric system (M/ Sq.m), and imperial system (Ft/ Sq.ft) shown is for reference only.

TYPICAL 3 BHK UNIT



SUPER BUILT-UP AREA

176.32 Sq.m (1,898 Sq.ft.)

CARPET AREA

118.42 Sq.m (1,274.67 Sq.ft.)

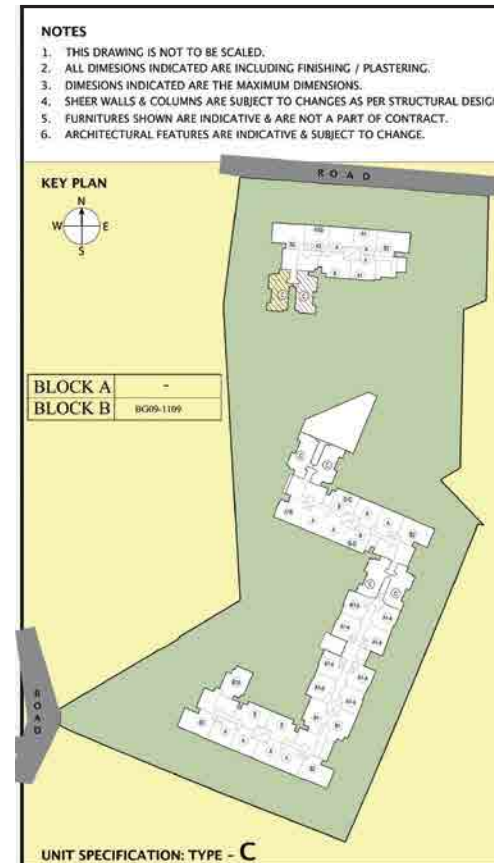
BALCONY CARPET AREA

9.39 sq.m (101.07 Sq.ft.)

The information depicted herein viz., master plans, floor plans, furniture layout, fittings, illustrations, specifications, designs, dimensions, rendered views, colours, amenities and facilities etc., are subject to change without notifications as may be required by the relevant authorities or the developer's architect, and cannot form part of an offer or contract. Whilst every care is taken in providing this information, the Developer cannot be held liable for variations. All illustrations and pictures are artist's impression only. The information are subject to variations, additions, deletions, substitutions and modifications as may be recommended by the company's architect and/or the relevant approving authorities. The Developer is wholly exempt from any liability on account of any claim in this regard. (1 square metre = 10.764 square feet). E & OE.

All dimensions and calculations are done in metric system (M/ Sq.m), and imperial system (Ft/ Sq.ft) shown is for reference only.

TYPICAL 3 BHK UNIT



SUPER BUILT-UP AREA

176.32 Sq.m (1,898 Sq.ft.)

CARPET AREA

118.42 Sq.m (1,274.67 Sq.ft.)

BALCONY CARPET AREA

9.39 sq.m (101.07 Sq.ft.)

The information depicted herein viz., master plans, floor plans, furniture layout, fittings, illustrations, specifications, designs, dimensions, rendered views, colours, amenities and facilities etc., are subject to change without notifications as may be required by the relevant authorities or the developer's architect, and cannot form part of an offer or contract. Whilst every care is taken in providing this information, the Developer cannot be held liable for variations. All illustrations and pictures are artist's impression only. The information are subject to variations, additions, deletions, substitutions and modifications as may be recommended by the company's architect and/or the relevant approving authorities. The Developer is wholly exempt from any liability on account of any claim in this regard. (1 square metre = 10.764 square feet). E & OE.

All dimensions and calculations are done in metric system (M/ Sq.m), and imperial system (Ft/ Sq.ft) shown is for reference only.